



Feature Guide

Double-Take Server Recovery Option

Table of Contents

Introduction	3
Features	4
Continuous full server protection using Double-Take.....	4
Easy implementation and management.....	4
Recovery Manager	4
“Push” Install.....	4
Snapshot Support	4
Reduce the time to recover	4
Supports dissimilar hardware.....	4
Supports virtual to physical and physical to virtual environments.....	4
Broad Application Support.....	4
About Double-Take® Software	5

Introduction

Double-Take® Server Recovery Option is a streamlined, full server data protection solution that reduces costs for businesses by simplifying installation and restoration. An uncluttered user interface makes Double-Take Server Recovery Option easy for non-technical staff to install and maintain. Once installed, Double-Take continuously replicates changes to data, applications, and the source server's operating system, protecting the entire server. When it's time to recover, the Recovery Manager application allows the user to configure and perform full-server recovery quickly, with added validation steps to make sure recovery will go as planned. Double-Take Server Recovery Option can also be used to migrate a server to different hardware, allowing you to repurpose licenses for disaster recovery.

Features

Continuous full server protection using Double-Take

Double-Take Server Recovery Option is built on Double-Take technology, the world's most relied-upon solution for accessible and affordable data protection solutions for disaster recovery, and centralized backup.

Easy implementation and management

Simplified full server connection & Flexible Protection

Additions to the Double-Take Management Console provide an easy-to-follow wizard for creating a connection that protects the entire server. In certain circumstances, not every volume on a server needs protected. Double-Take Server Recovery Option provides the option to exclude one or more data volumes at either protection or recovery time.

Recovery Manager

The Recovery Manager application allows you to quickly and easily configure and perform recovery, including validation steps that insure recovery goes as planned. Validation compares the image of the source server to the actual recovery server then alerts you of potential problems.

“Push” Install

Recovery Manager pushes Double-Take to the recovery server if necessary, eliminating the need to have Double-Take pre-installed on the recovery server.

Snapshot Support

Double-Take integrates with Microsoft Volume Shadow Copy Service to allow you to schedule and recover from up to 512 point-in-time copies of data on your Double-Take target.

Reduce the time to recover

When a system volume or entire server fails, recovery of both system state and data can be performed from the Recovery Manager. This reduces the number of steps and time needed to recover a server to its original state, improving achievable recovery time objectives (RTO).

Supports dissimilar hardware

The recovery process can account for a variety of differences between the original source and recovery server, prohibit incompatible differences, and warn the user of possible performance degradations after recovery.

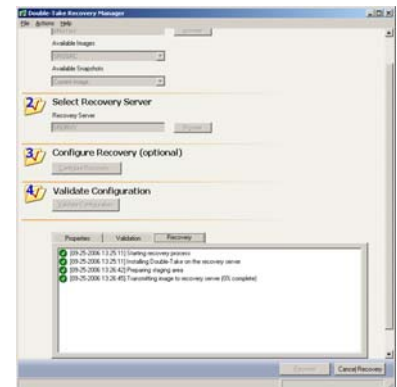
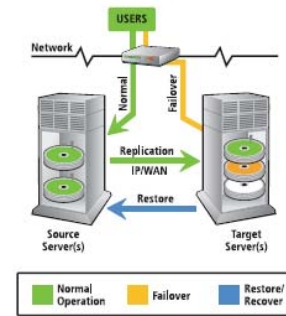
Supports virtual to physical and physical to virtual environments

Double-Take Server Recovery Option replicates between any configuration of physical and virtual systems.

Broad Application Support

Double-Take Server Recovery Option protects the entire server so there is no need for specialized application support. Double-Take Server Recovery Option supports most business-critical applications.

How Double-Take Works



About Double-Take® Software

Double-Take® Software provides the world's most relied upon solution for accessible and affordable data protection for Microsoft® Windows® applications. The Double-Take product is the standard in data replication, enabling customers to protect business-critical data that resides throughout their enterprise. With its partner programs and professional services, Double-Take delivers unparalleled data protection, centralized back-up, high availability, and recoverability. It's the solution of choice for thousands of customers, from SMEs to the Fortune 500 in the banking, finance, legal services, retail, manufacturing, government, education and healthcare markets. Double-Take is an integral part of their disaster recovery, business continuity and overall storage strategies. For more information, please visit www.doubletake.com.

Double-Take Software Headquarters

257 Turnpike Road
Southborough, MA 01772
Phone: +1-800-964-0185 or +1-508-229-8483
Fax: +1-508-229-0866

Double-Take Software Sales

8470 Allison Pointe Blvd. Suite 300
Indianapolis, IN 46250
Phone: +1-888-674-9495 or +1-317-598-0185
Fax: +1-317-598-0187

© 2006 Double-Take Software, Inc. All rights reserved. Double-Take, GeoCluster, and NSI are registered trademarks of Double-Take Software, Inc. Balance, Double-Take for Virtual Systems, and Double-Take for Virtual Servers are trademarks of Double-Take Software, Inc. Microsoft, Windows, and the Windows logo are trademarks or registered trademarks of Microsoft Corporation in the United States and/or other countries. All other trademarks are the property of their respective companies.